

PROJECT	DESIGNATION
1902832	1902832
CONTRACT	BRIDGE FILE
R-42649	N/A

INDIANA DEPARTMENT OF TRANSPORTATION



ROAD PLANS

ROUTE: WESTCHESTER-LIBERTY TRAIL: SHARED USE PATH - PHASE 3A

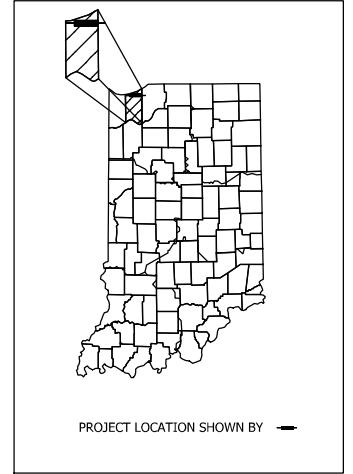
PROJECT NO. 1902832 P.E.
 1902832 R/W
 1902832 CONST.

Project Description: The Project is Located Along CR 1100 N, Beginning at the Intersection of CR 1100 N and CR 50 E, Continuing East Approximately 0.45 Miles to a Point of Termination Approximately 250' West of the Intersection of CR 1100 N and CR 100 E. The Project is Located Within the Town Limits of Chesterton, Porter County, Indiana in Sections 1 and 12, T 36 N, R 6 W and Section 7, T 36 N, R 5 W, Westchester Township.

TRAFFIC DATA		
A.A.D.T.	N/A	V.F.R.D.
A.A.D.T.	N/A	V.F.R.D.
D.H.V.	N/A	V.F.H.
DIRECTIONAL DISTRIBUTION	N/A	%
TRUCKS	N/A	% A.A.D.T.
	N/A	% D.H.V.
DESIGN DATA		
DESIGN SPEED	15	M.P.H.
PROJECT DESIGN CRITERIA	IDM 51-7.05	
FUNCTIONAL CLASSIFICATION	SHARED-USE PATH	
RURAL/URBAN	RURAL	
TERRAIN	LEVEL	
ACCESS CONTROL	NONE	

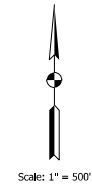
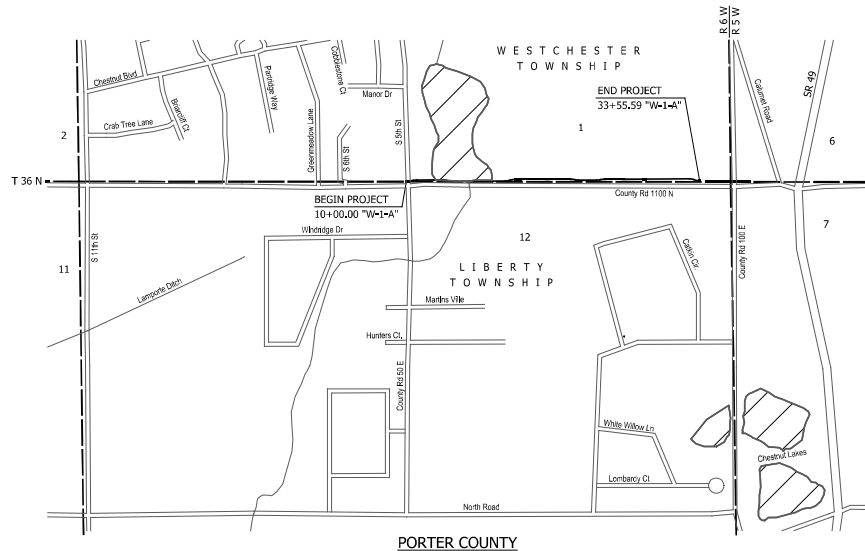
TOWN OF CHESTERTON, INDIANA TOWN COUNCIL	
Sharon Darnell, President	Date
Jennifer Fisher, Member	Date
Lloyd Kitzredge, Member	Date
James Ton, Member	Date
Dane Lafata, Member	Date

TOWN OF CHESTERTON, INDIANA	
Mark O'Dell, Town Engineer, ERC	Date



LATITUDE: 41°35'34.90"N LONGITUDE: 87° 3'6.42"W

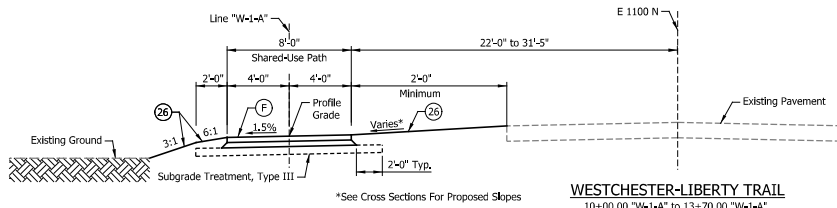
Gross Length: 0.45 MI.
 Net Length: 0.45 MI.
 Maximum Grade: 4.29 %



INDIANA DEPARTMENT OF TRANSPORTATION
 STANDARD SPECIFICATIONS DATED 2024
 TO BE USED WITH THESE PLANS.

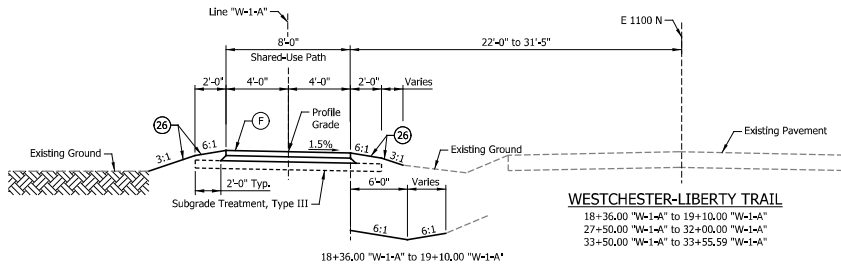
PLANS PREPARED BY: American Structurepoint, Inc. (317) 547-5580 PHONE NUMBER
 CERTIFIED BY: _____ DATE
 APPROVED FOR LETTING: _____ DATE
 INDIANA DEPARTMENT OF TRANSPORTATION

BRIDGE FILE	
N/A	
DESIGNATION	
1902832	
SURVEY BOOK	
N/A	1 36
PROJECT	
R-42649	1902832



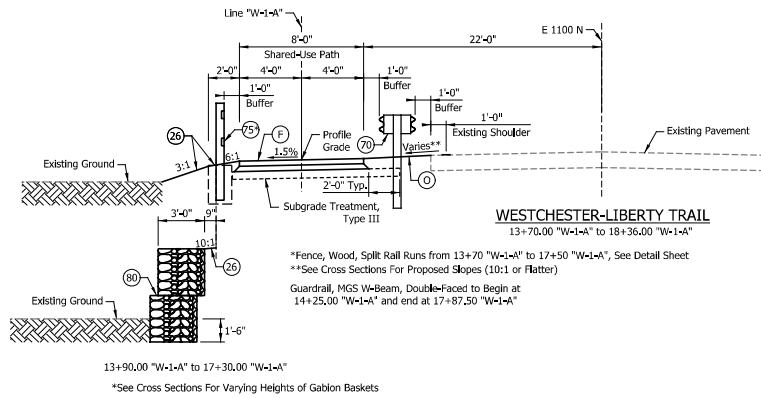
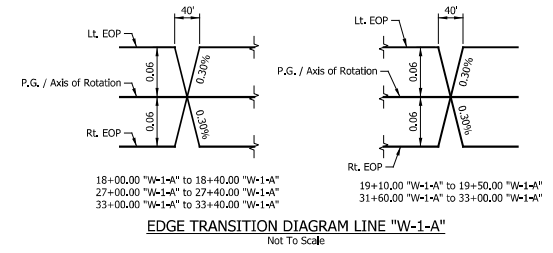
WESTCHESTER-LIBERTY TRAIL

10+00.00 "W-1-A" to 13+70.00 "W-1-A"
 19+10.00 "W-1-A" to 27+50.00 "W-1-A"
 32+00.00 "W-1-A" to 33+50.00 "W-1-A"



WESTCHESTER-LIBERTY TRAIL

18+36.00 "W-1-A" to 19+10.00 "W-1-A"
 27+50.00 "W-1-A" to 32+00.00 "W-1-A"
 33+50.00 "W-1-A" to 33+55.59 "W-1-A"



WESTCHESTER-LIBERTY TRAIL

13+70.00 "W-1-A" to 18+36.00 "W-1-A"

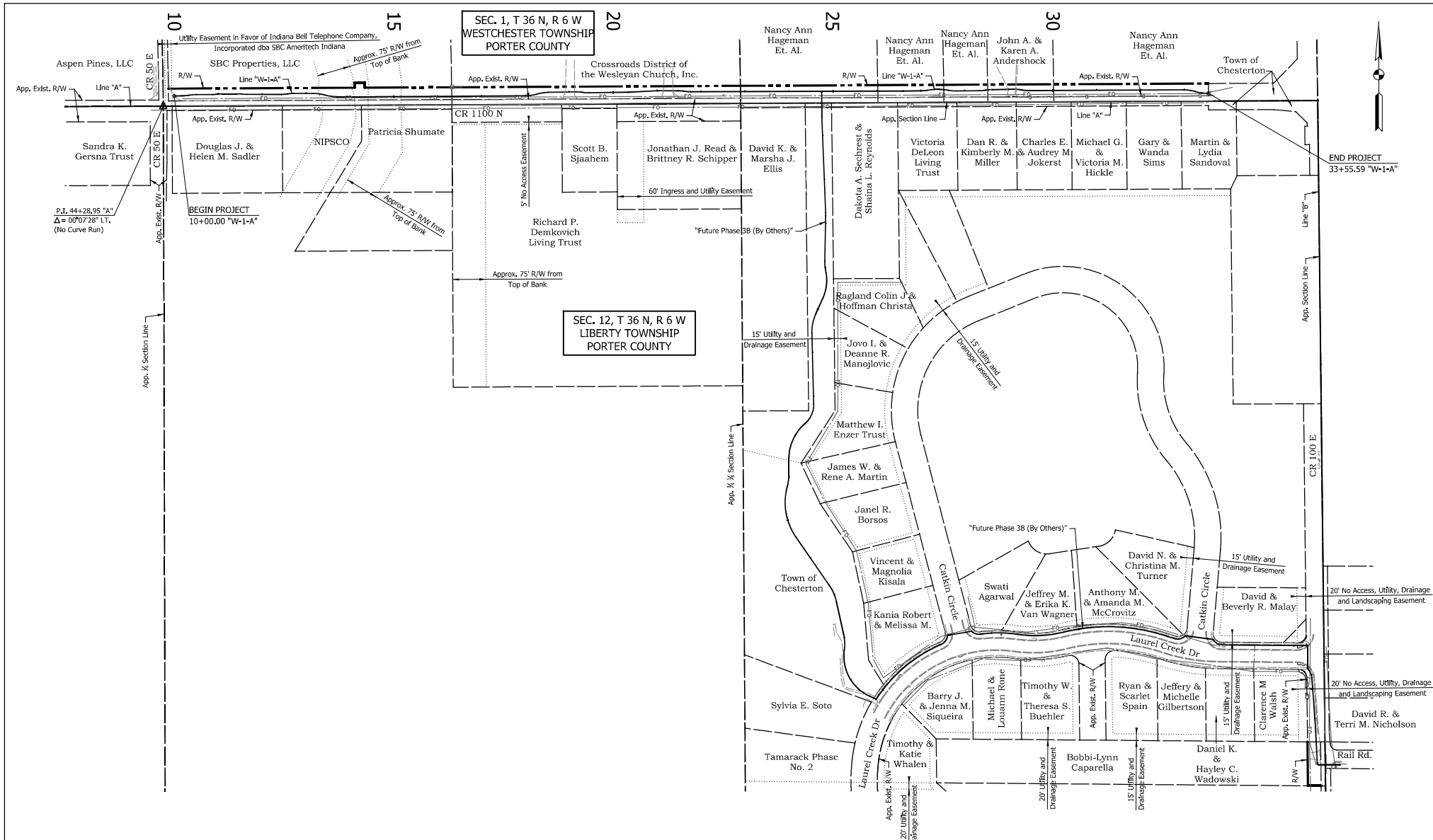
LEGEND

- (B) Boardwalk
- (F) 4" PCCP w/ 8" Spacing of Transverse Joints on 4" Compacted Aggregate NO. 53, Base
- (C) 9" Compacted Aggregate, No. 53
- (26) Sodding, Nursery
- (70) Guardrail, MSG W-Beam, Double Faced 6 Ft. 3 In. Spacing
- (75) Fence, Wood, Split Rail, 42 In.
- (80) Gablions, Metallic Coated

RECOMMENDED FOR APPROVAL	DESIGN ENGINEER	DATE
DESIGNED: JJS	DRAWN: CAK	
CHECKED: GAL	CHECKED: GAL	

INDIANA DEPARTMENT OF TRANSPORTATION	
TYPICAL CROSS SECTIONS LINE "W-1-A"	

HORIZONTAL SCALE	BRIDGE FILE
1/2" = 1'-0"	N/A
VERTICAL SCALE	DESIGNATION
N/A	1902832
SURVEY BOOK	SHEETS
N/A	3 of 36
CONTRACT	PROJECT
R-42649	1902832



DATE	REVISION

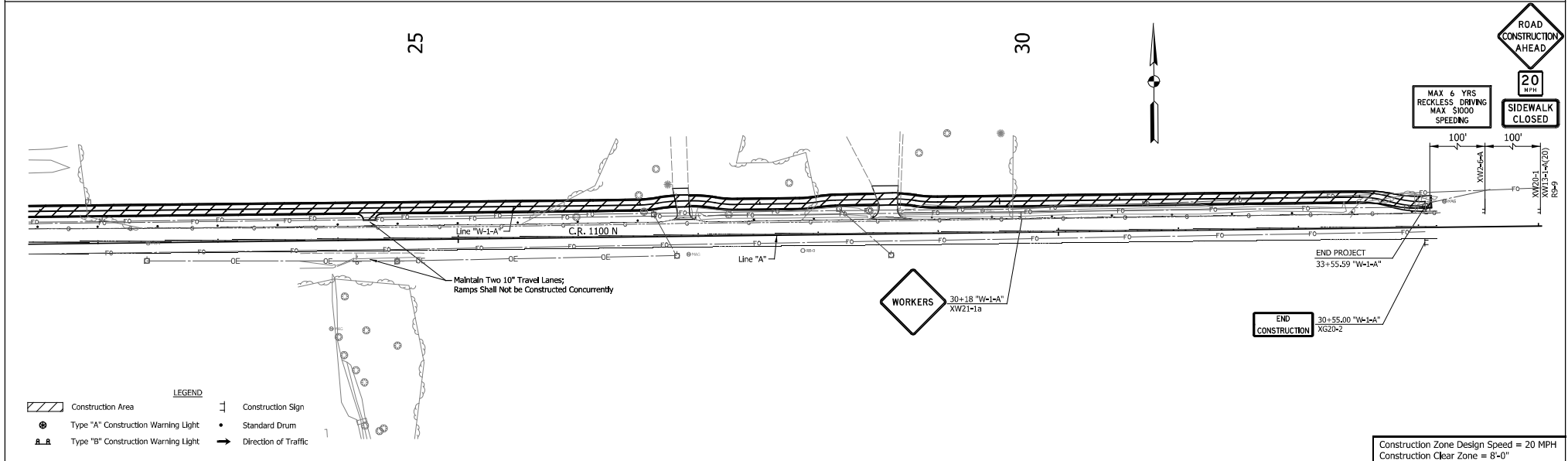
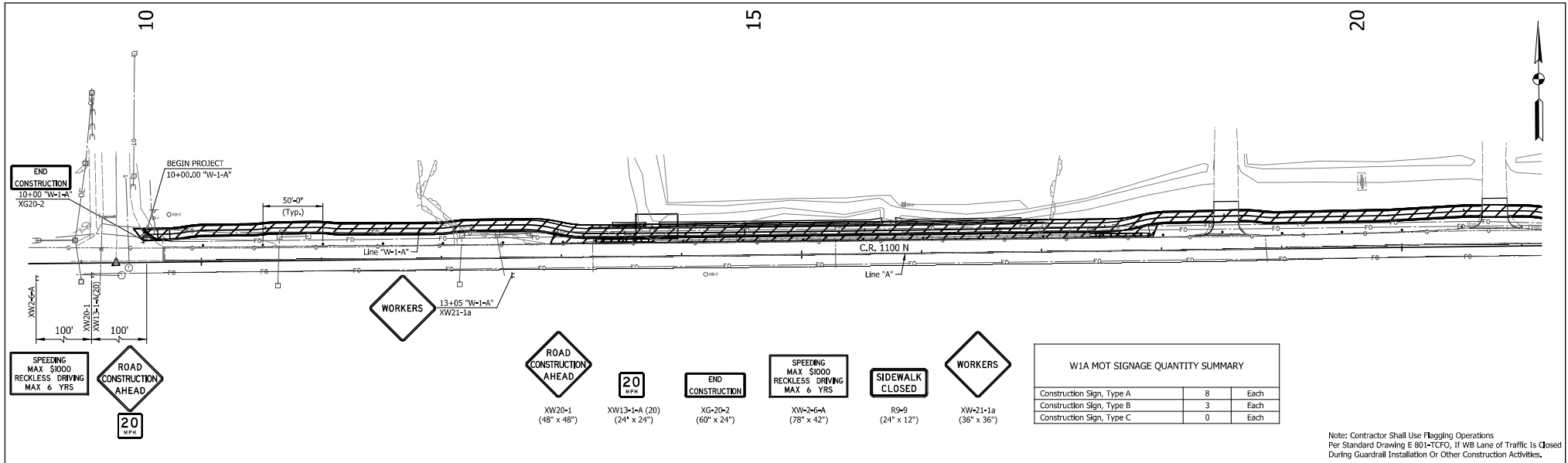
RECOMMENDED FOR APPROVAL	DESIGN ENGINEER	DATE
DESIGNED: JIS	DRAWN: JIS	
CHECKED: GAL	CHECKED: GAL	

INDIANA
DEPARTMENT OF TRANSPORTATION

PLAT NO. 1

HORIZONTAL SCALE	BRIDGE FILE
1"=100'	N/A
VERTICAL SCALE	DESIGNATION
N/A	1902832
SURVEY BOOK	SHEETS
N/A	4 of 36
CONTRACT	PROJECT
R-42649	1902832

1902832.dwg



LEGEND

Construction Area	Construction Sign
Type "A" Construction Warning Light	Standard Drum
Type "B" Construction Warning Light	Direction of Traffic

DATE	REVISION

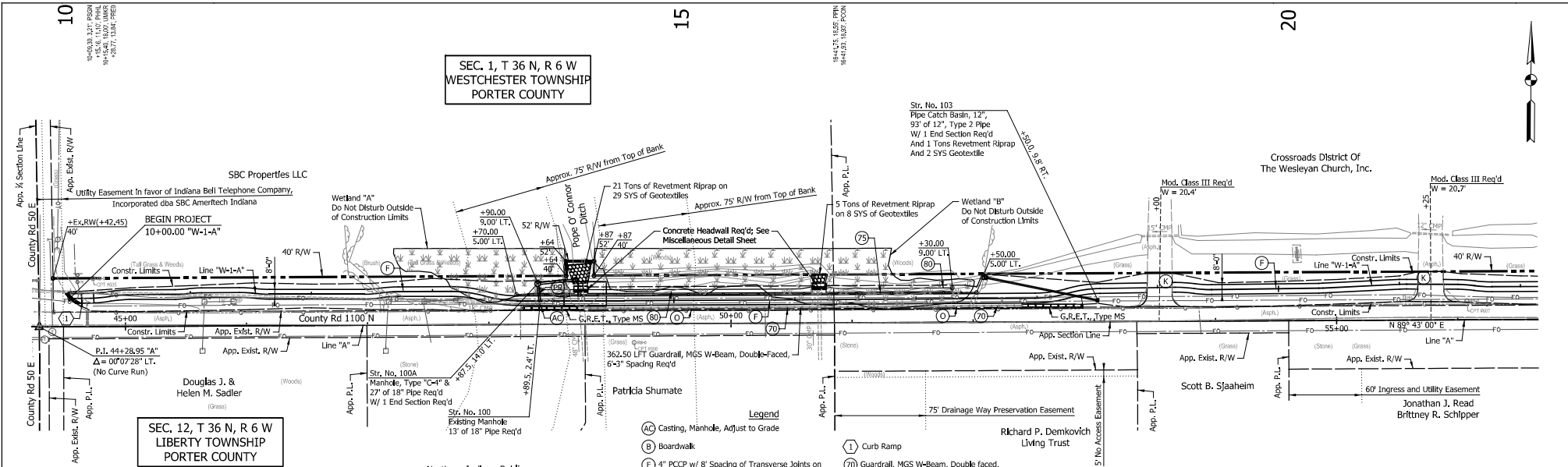
RECOMMENDED FOR APPROVAL	DESIGN ENGINEER	DATE
DESIGNED: LMZ	DRAWN: LMZ	
CHECKED: GAL	CHECKED: GAL	

INDIANA
DEPARTMENT OF TRANSPORTATION

MAINTENANCE OF TRAFFIC
LINES "W-1-A"

HORIZONTAL SCALE	BRIDGE FILE
1" = 40'	N/A
VERTICAL SCALE	DESIGNATION
N/A	1902832
SURVEY BOOK	SHEETS
N/A	7 of 36
CONTRACT	PROJECT
R-42649	1902832

1902832.dwg

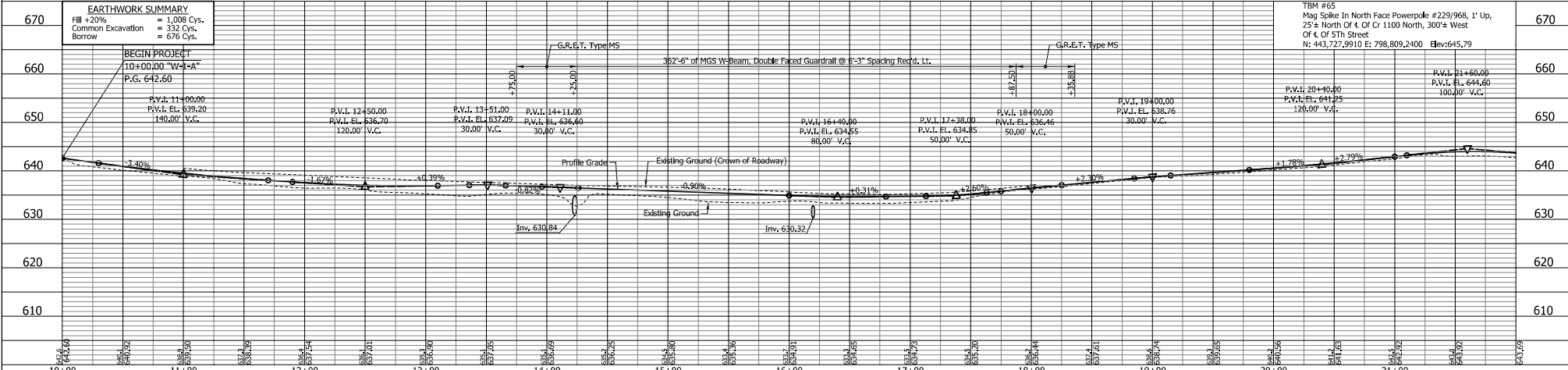


SEC. 1, T 36 N, R 6 W
WESTCHESTER TOWNSHIP
PORTER COUNTY

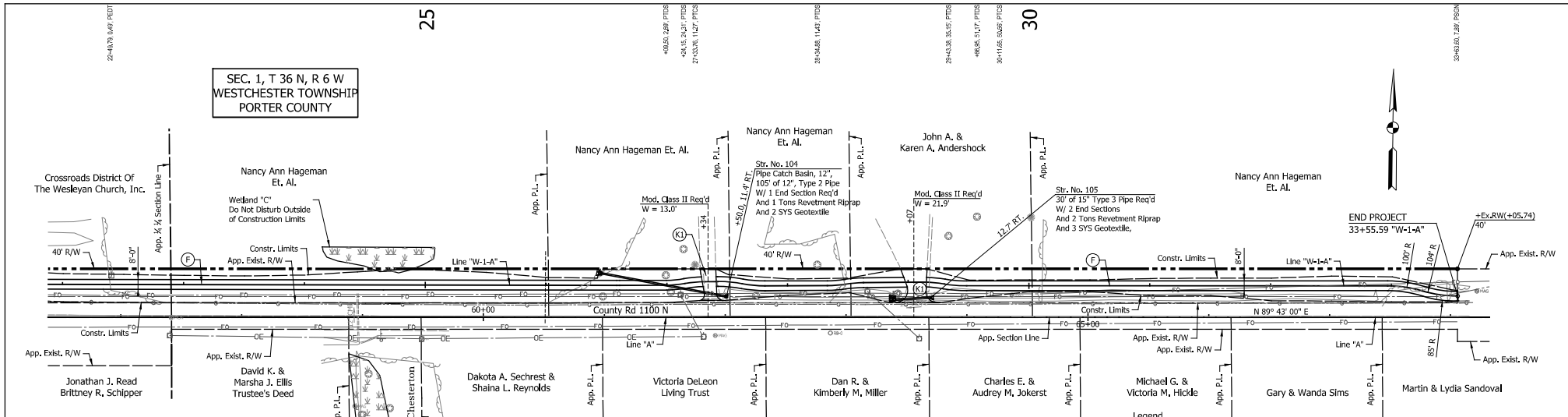
SEC. 12, T 36 N, R 6 W
LIBERTY TOWNSHIP
PORTER COUNTY

- Legend**
- (AC) Casting, Manhole, Adjust to Grade
 - (B) Boardwalk
 - (F) 4" PCPP w/ 8" Spacing of Transverse Joints on 4" Compacted Aggregate No. 53, Base
 - (P) Protect
 - (U) Utility Relocate (By Others)
 - (K) PCPP for Approaches, 6 in., on Subgrade Treatment Type II
 - (9) 9" Compacted Aggregate, No. 53
 - (1) Curb Ramp
 - (70) Guardrail, MGS W-Beam, Double faced, 6 Ft. 3 In. Spacing
 - (75) Fence, Rail, Wood
 - (80) Gabions, Metallic Coating
 - (K1) PCPP for Approaches, 6 in., on Subgrade Treatment Type II
 - (R) Pipe, Remove

NOTES:
All Topographic Information Described From Line "W-1-A", Except as Noted.
All Geometric Tie-In Details for Additional Alignment Information
All Right-of-Way Information Described From Line "A", Except as Noted.



DATE	REVISION	RECOMMENDED FOR APPROVAL DESIGN ENGINEER: JIS DRAWN: CAK CHECKED: GAL	INDIANA DEPARTMENT OF TRANSPORTATION PLAN AND PROFILE STA. 10+00.00 TO STA. 22+00.00 "W-1-A"	HORIZONTAL SCALE	BRIDGE FILE
				1" = 40'	N/A
				VERTICAL SCALE	DESIGNATION
		1" = 10'	1902832		
		DESIGNED: JIS	SURVEY BOOK	SHEETS	
		DRAWN: CAK	N/A	8 of 36	
		CHECKED: GAL	CONTRACT	PROJECT	
			R-42649	1902832	

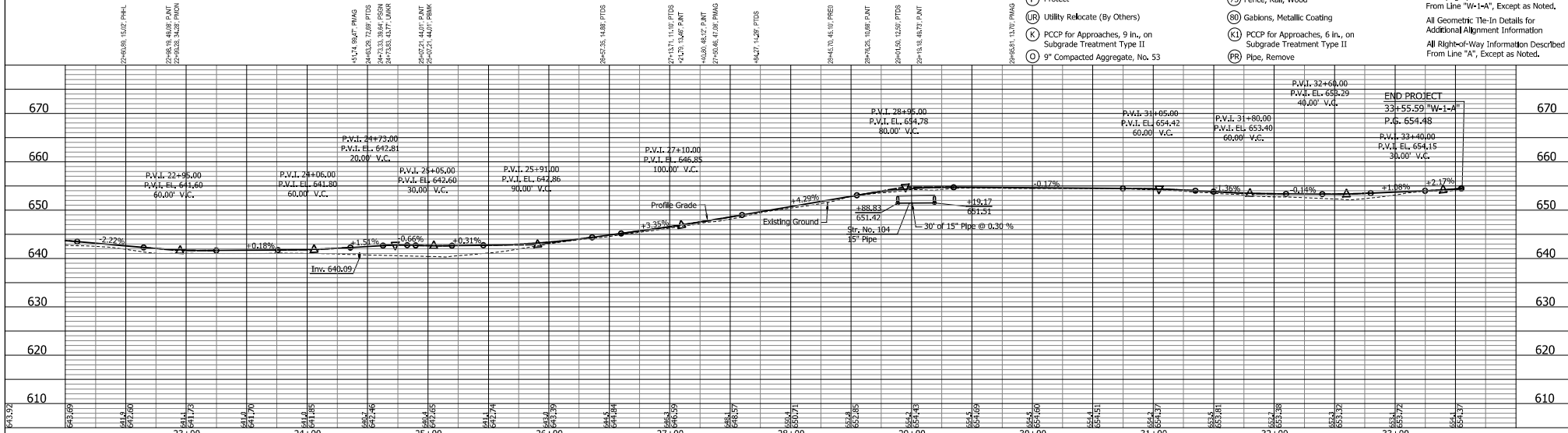


SEC. 1, T 36 N, R 6 W
WESTCHESTER TOWNSHIP
PORTER COUNTY

SEC. 12, T 36 N, R 6 W
LIBERTY TOWNSHIP
PORTER COUNTY

- Legend**
- (AC) Casting, Manhole, Adjust to Grade
 - (B) Boardwalk
 - (F) 4" PCCP w/ 8" Spacing of Transverse Joints on 4" Compacted Aggregate NO. 53, Base
 - (P) Protect
 - (UR) Utility Relocate (By Others)
 - (K) PCCP for Approaches, 9 in., on Subgrade Treatment Type II
 - (D) 9" Compacted Aggregate, No. 53
 - (1) Curb Ramp
 - (70) Guardrail, MGS W-Beam, Double faced, 6 Ft. 3 In. Spacing
 - (75) Fence, Rail, Wood
 - (80) Gabions, Metallic Coating
 - (K1) PCCP for Approaches, 6 in., on Subgrade Treatment Type II
 - (PR) Pipe, Remove

NOTES:
All Topographic Information Described From Line "W-1-A", Except as Noted.
All Geometric Tie-In Details for Additional Alignment Information
All Right-of-Way Information Described From Line "A", Except as Noted.



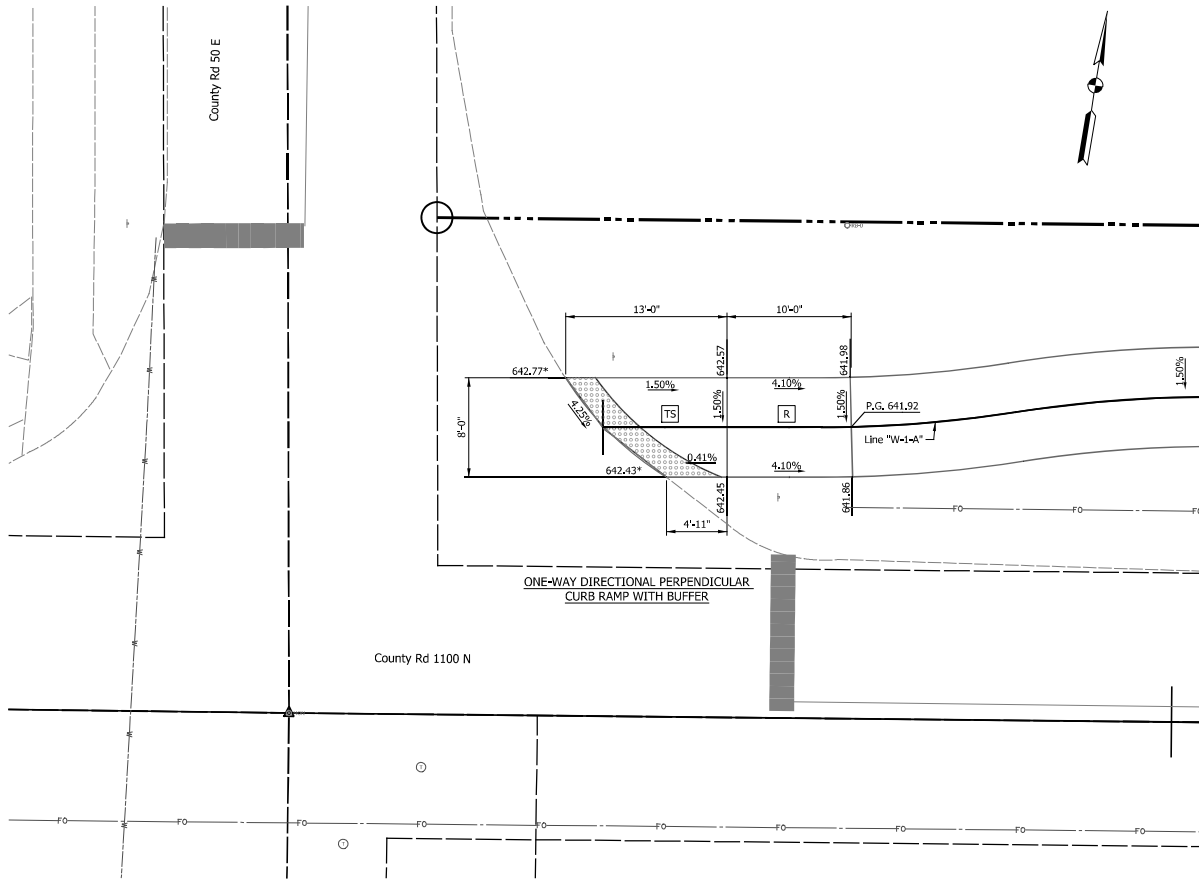
DATE	REVISION

RECOMMENDED FOR APPROVAL	DESIGN ENGINEER	DATE
DESIGNED: JIS	DRAWN: CAK	
CHECKED: GAL	CHECKED: GAL	

INDIANA
DEPARTMENT OF TRANSPORTATION

PLAN AND PROFILE
STA. 22+00.00 TO ST. 34+00 "W-1-A"

HORIZONTAL SCALE	BRIDGE FILE
1" = 40'	N/A
VERTICAL SCALE	DESIGNATION
1" = 10'	1902832
SURVEY BOOK	SHEETS
N/A	9 of 36
CONTRACT	PROJECT
R42649	1902832



NOTES:

1. Curb Ramps Designed Per Standard Drawing Series E 604-SWCR
2. * Match Existing
3. Running Slope on Blended Transitions Shall Not Exceed 5.0%.
4. Flared Sides Shall Not Exceed a 10.0% Slope.
5. Cross Slopes Shall Not Exceed 1.5%.
6. If field conditions differ from topographic information shown on the plans, the Contractor shall consult the design engineer and make necessary field adjustments to comply with ADA standards.
7. Removal of existing Detectable Warning Surface and replacement of adjacent concrete curb ramp shall be included in the cost of retrofitting Detectable Warning Surface.
8. Survey Limits extend to the joint between the existing curb and gutter and pavement. Contractor to match existing elevation at edge of pavement.
9. See Typical Cross Sections for Patching Detail

LEGEND

- Direction of Slope
- ⊙ Detectable Warning Surface
- ⬇ Sodding
- TS Turning Space
- FS Flare Side
- PC Pedestrian Clear Space
- R Curb Ramp
- CS Clear Space - Cross Slope Shall Not Exceed 1.5% and Counter Slope Shall Not Exceed 5%
- ⊖ Patch
- Ⓟ Curb & Gutter, Roll Curb, Modified
- Ⓠ Curb & Gutter, Concrete, Modified
- B.C. Bottom of Curb
- T.C. Top of Curb
- TIP Temp. Inlet Protection

DATE	REVISION

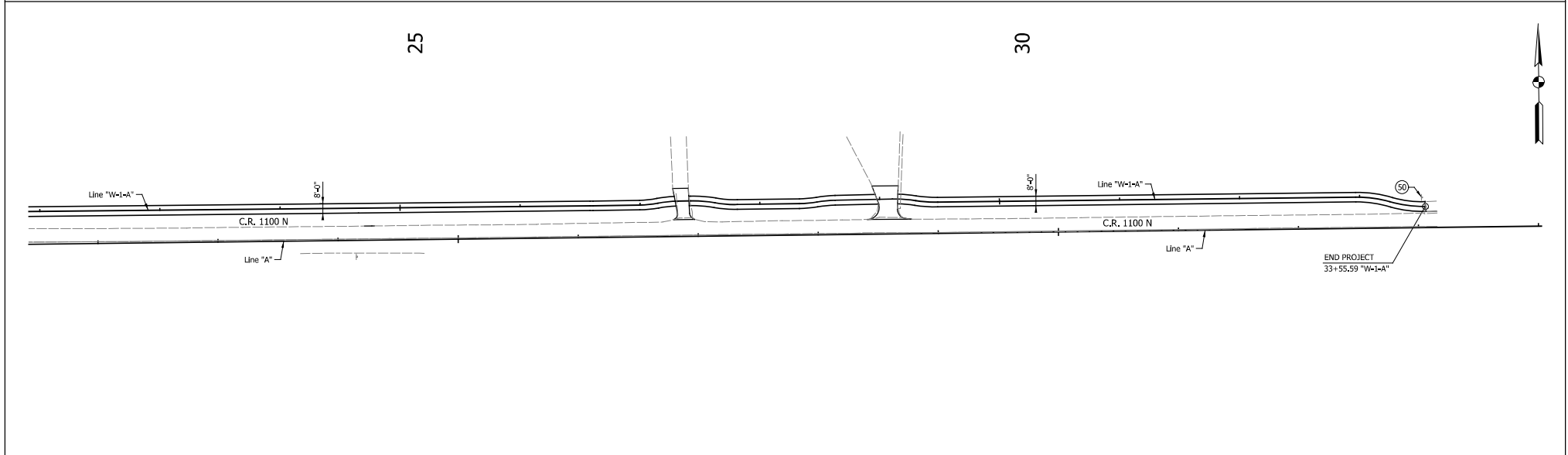
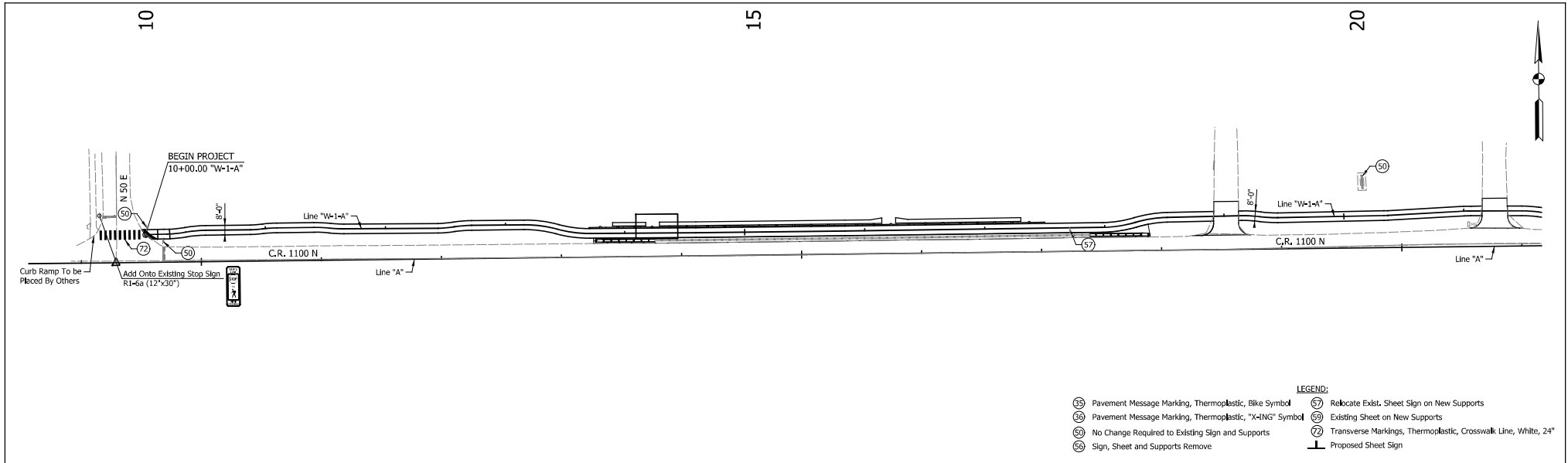
RECOMMENDED FOR APPROVAL	DESIGN ENGINEER	DATE
DESIGNED: JIS	DRAWN: JIS	
CHECKED: GAL	CHECKED: GAL	

INDIANA
DEPARTMENT OF TRANSPORTATION

CURB RAMP DETAILS

HORIZONTAL SCALE	BRIDGE FILE
P" = 5'	N/A
VERTICAL SCALE	DESIGNATION
N/A	1902832
SURVEY BOOK	SHEETS
N/A	10 of 36
CONTRACT	PROJECT
R42649	1902832

1802832.dwg



DATE	REVISION

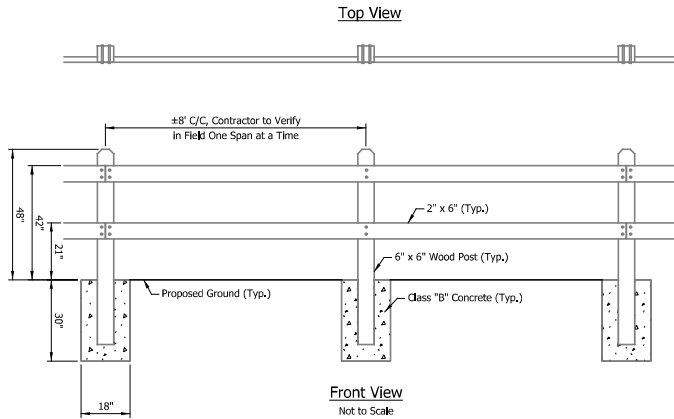
RECOMMENDED FOR APPROVAL	DESIGN ENGINEER	DATE
DESIGNED: LMZ	DRAWN: LMZ	
CHECKED: GAL	CHECKED: GAL	

INDIANA
DEPARTMENT OF TRANSPORTATION

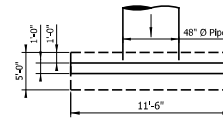
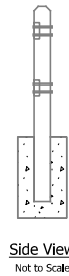
**PAVEMENT MARKINGS AND
SIGNING DETAILS**

HORIZONTAL SCALE	BRIDGE FILE
1" = 40'	N/A
VERTICAL SCALE	DESIGNATION
N/A	1902832
SURVEY BOOK	SHEETS
N/A	12 of 36
CONTRACT	PROJECT
R-42649	1902832

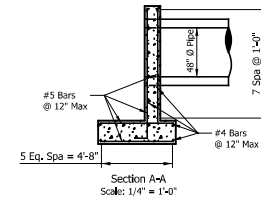
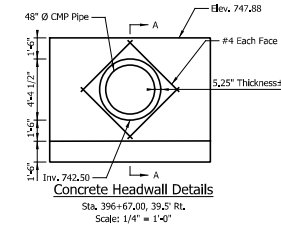
1802832-01



Fence, Wood, Split Rail, 42 in.
Sta. 13+70.00 to 17+78.00 LT., "W-1-A"

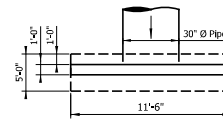


Note: 2" Cover Req'd.
for All Reinforcing Steel.

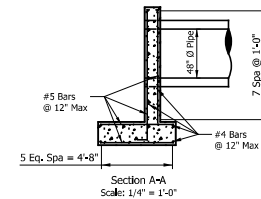
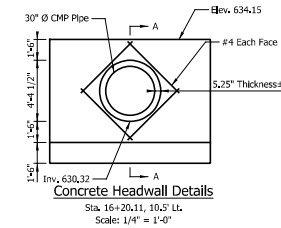


- Notes:
1. Cut Bars around Pipe as Required.
 2. If Unsuitable Soils are Encountered, Contact Engineer.
 3. Concrete to be 4000 PSI Minimum Compressive Strength.
 4. Reinforcing Steel in Accordance with ASTM A-615 (Reinforcing Bars).
 5. Actual Dimensions May Vary with Manufacturer's Tolerance.
 6. 3/4" Chamfer May be Provided on All Edges at Manufacturer's Recommendation.
 7. Contractor Shall Submit Shop Drawings for Review and Approval.

BILL OF MATERIALS	
Pay Item	Headwall (Dwn.)
Concrete, A, Substructure	6.0 CYS
Reinforcing Bars	580 LBS



Note: 2" Cover Req'd.
for All Reinforcing Steel.



- Notes:
1. Cut Bars around Pipe as Required.
 2. If Unsuitable Soils are Encountered, Contact Engineer.
 3. Concrete to be 4000 PSI Minimum Compressive Strength.
 4. Reinforcing Steel in Accordance with ASTM A-615 (Reinforcing Bars).
 5. Actual Dimensions May Vary with Manufacturer's Tolerance.
 6. 3/4" Chamfer May be Provided on All Edges at Manufacturer's Recommendation.
 7. Contractor Shall Submit Shop Drawings for Review and Approval.

BILL OF MATERIALS	
Pay Item	Headwall (Dwn.)
Concrete, A, Substructure	6.0 CYS
Reinforcing Bars	580 LBS

DATE	REVISION

RECOMMENDED FOR APPROVAL	DESIGN ENGINEER	DATE
DESIGNED: JIS	DRAWN: JIS	
CHECKED: GAL	CHECKED: GAL	

INDIANA
DEPARTMENT OF TRANSPORTATION

MISCELLANEOUS DETAILS

HORIZONTAL SCALE	BRIDGE FILE
N/A	N/A
VERTICAL SCALE	DESIGNATION
N/A	1902832
SURVEY BOOK	SHEETS
N/A	13 of 36
CONTRACT	PROJECT
R-42649	1902832