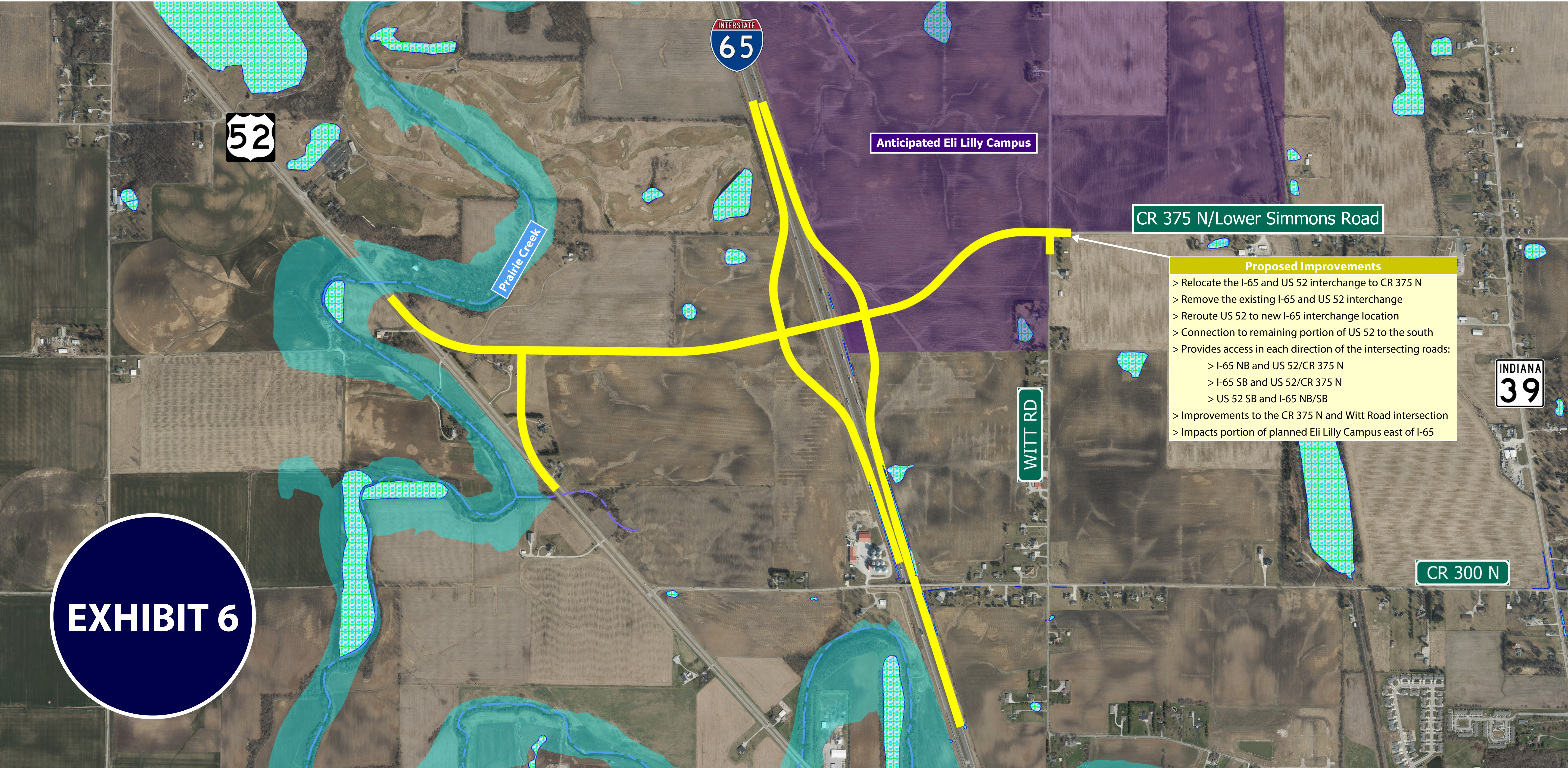


Conceptual Alternative 6: I-65 and CR 375 N

December 15, 2022
DRAFT - NOT FOR CONSTRUCTION

LEGEND

- Conceptual Alternative 6
- Stream
- Wetland
- Floodplain



0' 500'



I-65 and US 52 Interchange Improvement (DES 2200176)

INDOT Crawfordsville District
Boone County, Lebanon, Indiana

